



# Cordless LED Flashlight DML807



## 2W Top LED

with light-diffusing reflector and transparent lens



## Light diffusing plastic

(color: milky white)

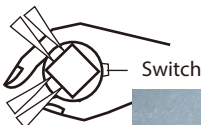


## 0.5W x 20 LEDs

- for wide and bright illumination
- 360 degree illumination (5 LEDs in a vertical row x 4 sides)

## Half brightness

with 10 LEDs (5 LEDs x 2 sides) on

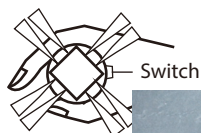


Top view

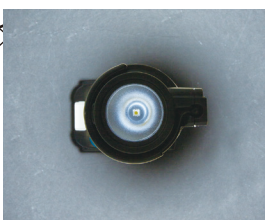


## Full brightness

with 20 LEDs (5 LEDs x 4 sides) on

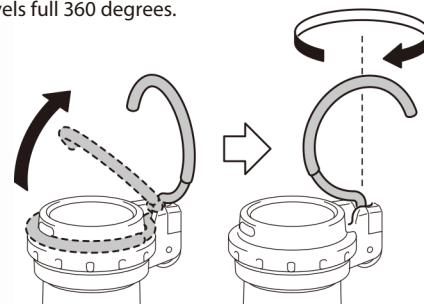


Top view



## Convenient metal hook

- can be retracted and stored behind the light head.
- swivels full 360 degrees.



## Ring for Strap

Strap with hook (Optional accessory for DML184) can be attached.



3-stage  
brightness  
switch

## USB output port (Type A, 5V, 2.1A)

with rubber cap to prevent dust and debris from entering



## Powered by All Makita LXT 14.4/18V Li-ion batteries

\*with Battery fuel gauge



- \*BL1860B: 6.0Ah
- \*BL1850B: 5.0Ah
- \*BL1840B: 4.0Ah
- \*BL1830B: 3.0Ah
- \*BL1820B: 2.0Ah
- BL1815N: 1.5Ah



- \*BL1460B: 6.0Ah
- BL1450B: 5.0Ah
- BL1440B: 4.0Ah
- \*BL1430B: 3.0Ah
- BL1415N: 1.5Ah

BL1850B

## Fast Charger

DC18RC



## Charger

DC18SD



Battery and charger are sold separately.

## Cordless LED Flashlight DML807

<b>Continuous use (hours)</b>	<b>Main :</b>
	20LEDs-11 (BL1850), 6.5 (BL1440), 10LEDs-23 (BL1850), 13 (BL1440)
<b>Sub light source (on top side)</b>	<b>Sub :</b>
	1 X 2W LED -36 (BL1850), 21 (BL1440)
<b>Main light source (on bar side)</b>	<b>Illuminance:</b> 1,900 lx*
	<b>luminous flux:</b> 130 lm
	<b>Type:</b> 1 x 2W LED
	<b>Illuminance (Full brightness):</b> 340lx* <b>Illuminance (Half brightness):</b> 310lx* <b>Luminous flux (Full brightness):</b> 710lm <b>Luminous flux (Half brightness):</b> 340lm <b>Type:</b> 20 x 0.5W LED <b>Service life:</b> 50,000 or more hours
<b>Dimensions(L x W x H)</b>	414x79x155mm (16-1/4"x3-1/8"x6-1/8")
<b>Net weight</b>	0.72kg (1.6lbs) with BL1415N
	1.0kg (2.3lbs) with BL1850B

*Battery and charger are sold separately. \*at 0.5m from the light source weight according to EPTA-Procedure 01/ver.2.1 Items of standard equipment and specifications may vary by country or area.*

## Makita Corporation

3-11-8 Sumiyoshi-cho, Anjo, Aichi, 446-8502 Japan