

FUEL CELL



BATTERY



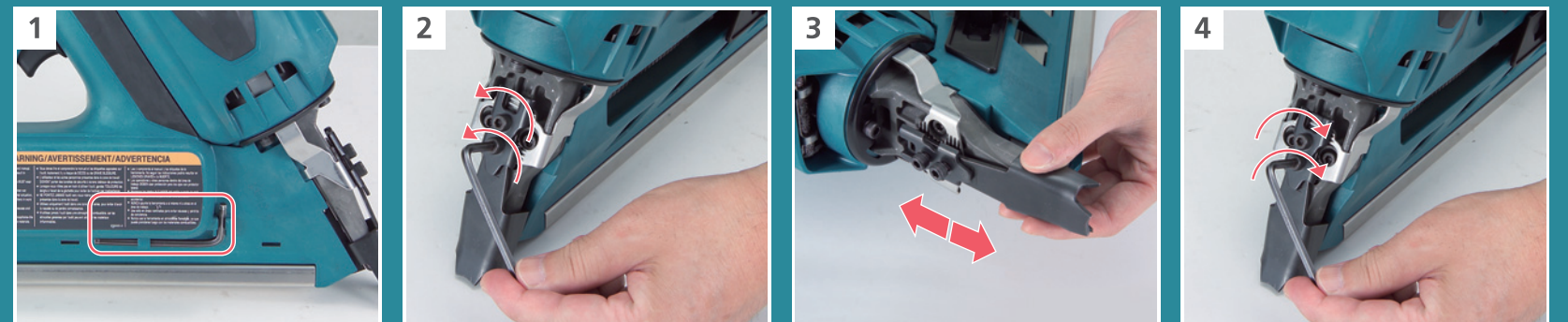
NAILS



DRIVE



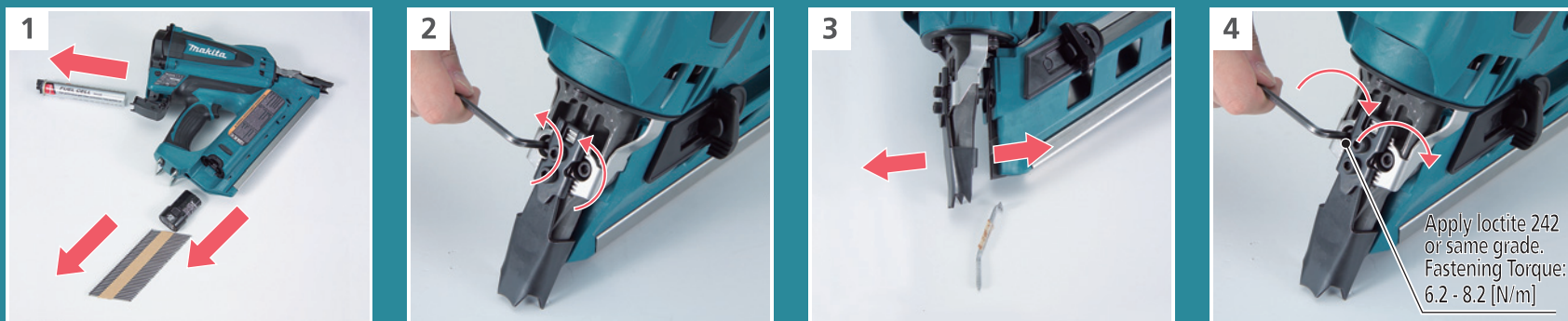
DEPTH ADJUSTMENT



HOOK



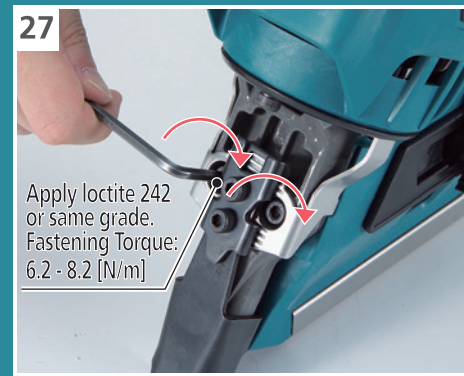
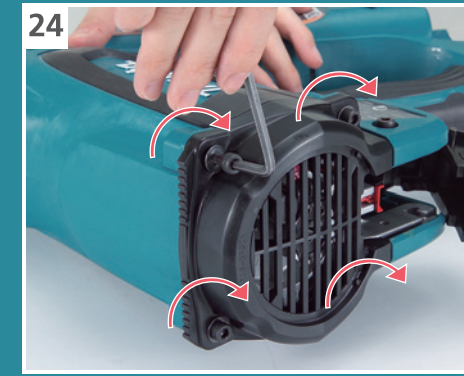
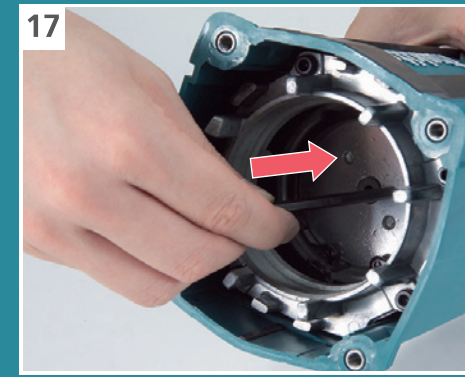
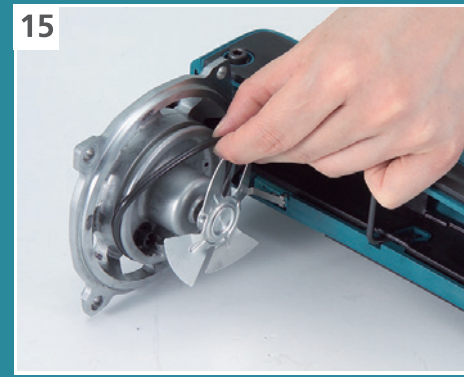
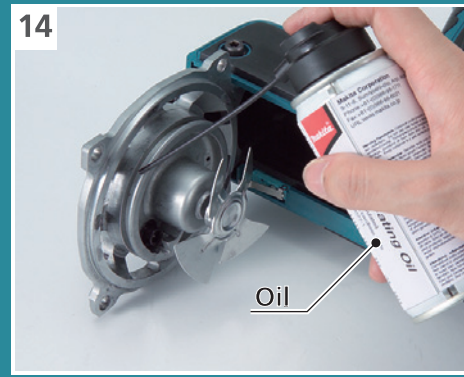
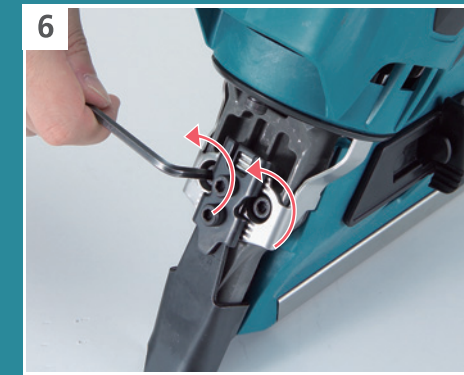
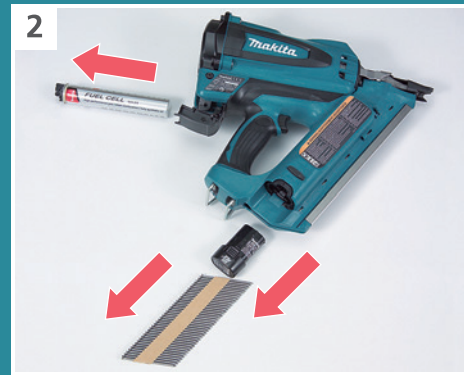
CLEARING JAM



Cordless Clipped Head Framing Nailer
GN900

Apply loctite 242 or same grade.
Fastening Torque:
6.2 - 8.2 [N/m]

CLEANING GUIDE



Makita Europe N.V.

Jan-Baptist Vinkstraat 2, 3070 Kortenberg, Belgium

Makita Corporation

3-11-8, Sumiyoshi-cho, Anjo, Aichi 446-8502 Japan

www.makita.com

