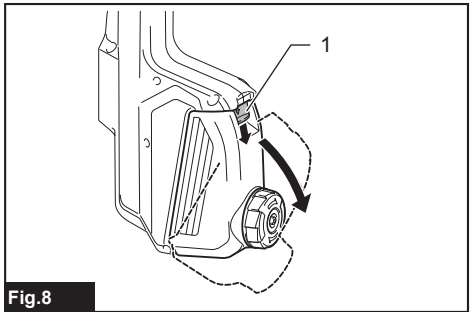
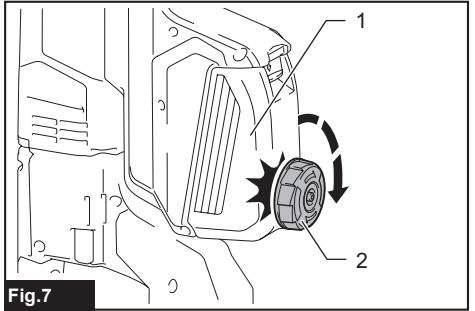
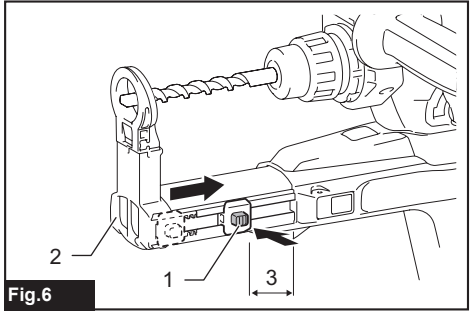
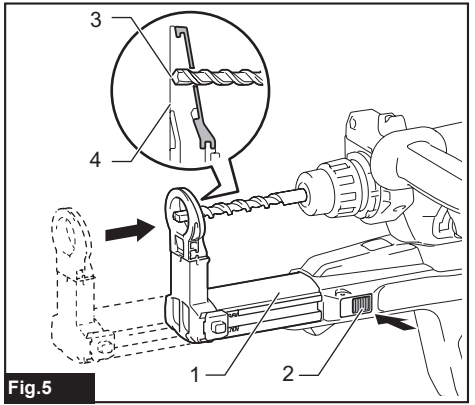
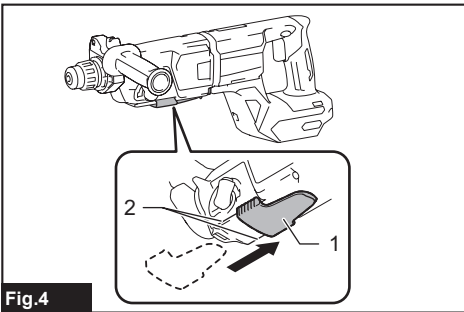
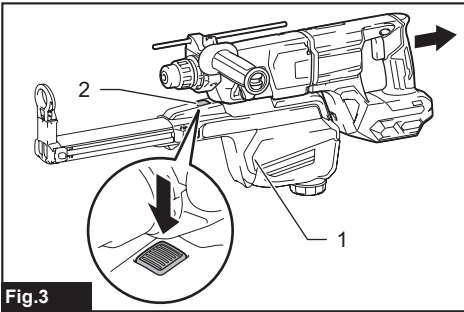
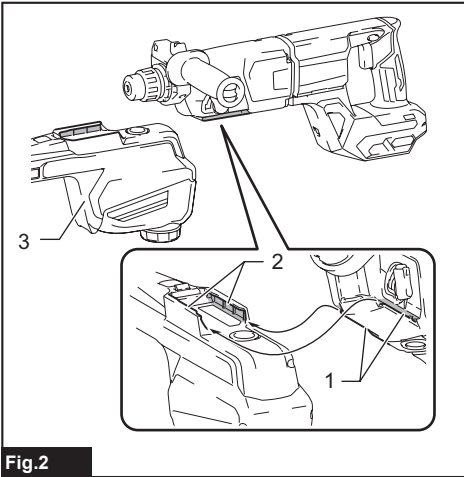
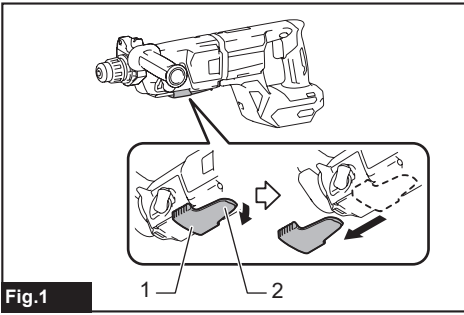


EN	Dust Collection System	INSTRUCTION MANUAL	5
PTBR	SISTEMA DE COLETA DE PÓ	MANUAL DE INSTRUÇÕES	7
FR	Système D'aspiration Des Poussières	MANUEL D'INSTRUCTIONS	10
DE	Staubabsaugung	BETRIEBSANLEITUNG	13
IT	Sistema di raccolta polveri	ISTRUZIONI PER L'USO	16
NL	Stofopvangsysteem	GEBRUIKSAANWIJZING	19
ES	Sistema de Recolección de Polvo	MANUAL DE INSTRUCCIONES	22
PT	SISTEMA DE COLETA DE PÓ	MANUAL DE INSTRUÇÕES	25
DA	System til støvopsamling	BRUGSANVISNING	28
EL	Σύστημα συλλογής σκόνης	ΕΓΧΕΙΡΙΔΙΟ ΟΔΗΓΙΩΝ	30
TR	Toz Toplama Sistemi	KULLANMA KILAVUZU	33
SV	Dammuppsamlingssystem	BRUKSANVISNING	35
NO	Støvpopsamlingssystem	BRUKSANVISNING	37
FI	Pölynkeräysjärjestelmä	KÄYTTÖOHJE	39
LV	Putekļu savākšanas sistēma	LIETOŠANAS INSTRUKCIJA	41
LT	Dulkių surinkimo sistema	NAUDOJIMO INSTRUKCIJA	43
ET	Tolmukogumissüsteem	KASUTUSJUHEND	45
PL	System Zbierania Pyłu	INSTRUKCJA OBSŁUGI	47
HU	Porgyűjtő rendszer	HASZNÁLATI KÉZIKÖNYV	50
SK	Systém na zber prachu	NÁVOD NA OBSLUHU	52
CS	Systém odsávání prachu	NÁVOD K OBSLUZE	54
SL	Sistem za zbiranje prahu	NAVODILA ZA UPORABO	56
SQ	Sistemi i grumbullimit të pluhurit	MANUALI I PËRDORIMIT	58
BG	Прахоуловител	РЪКОВОДСТВО ЗА ЕКСПЛОАТАЦИЯ	61
HR	Sustav za sakupljanje prašine	PRIRUČNIK S UPUTAMA	64
MK	Систем за собирање прав	УПАТСТВО ЗА УПОТРЕБА	67
SR	Систем за скупљање прашине	УПУТСТВО ЗА УПОТРЕБУ	70
RO	Sistem de colectare a prafului	MANUAL DE INSTRUCȚIUNI	73
UK	Система збирання пилу	ІНСТРУКЦІЯ З ЕКСПЛУАТАЦІЇ	76
RU	Система Пылеулавливания	РУКОВОДСТВО ПО ЭКСПЛУАТАЦИИ	79
KK	Шаң түтү жүйөсү	ПАЙДАЛАНУ ЖӨНІНДЕГІ НҮСҚАУЛЫҚ	82
ZHCN	集尘系统	使用说明书	85
ZHTW	集塵裝置系統	使用說明書	87
KO	집진기	취급 설명서	89
ID	Sistem Pengumpul Debu	PETUNJUK PENGGUNAAN	91
VI	Hệ Thống Hút Bụi	TÀI LIỆU HƯỚNG DẪN	94
TH	ระบบดักฝุ่น	คู่มือการใช้งาน	96
MS	Sistem Pengumpulan Habuk	MANUAL ARAHAN	99
FA		سیستم گردگیر	دفترچه راهنما 103
AR		نظام جمع الغبار	دليل الإرشادات 105





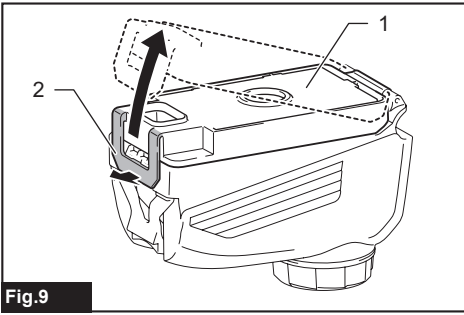


Fig.9

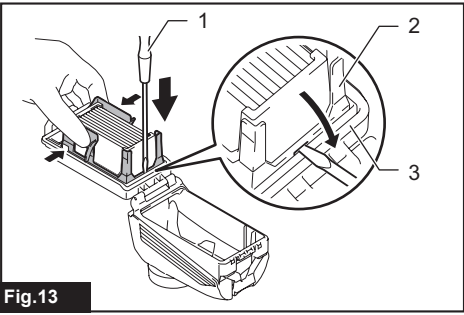


Fig.13

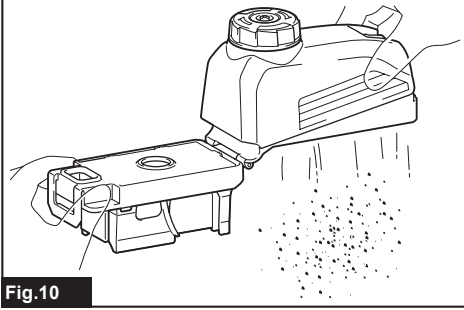


Fig.10

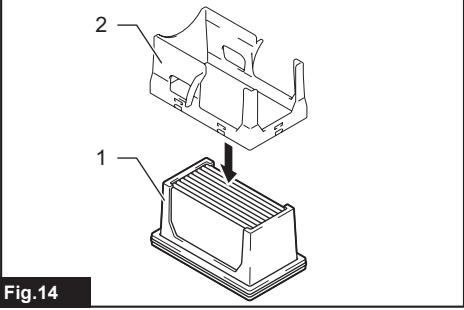


Fig.14

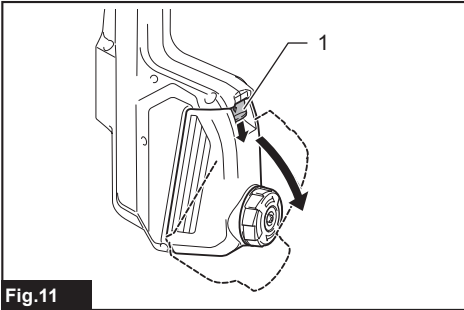


Fig.11

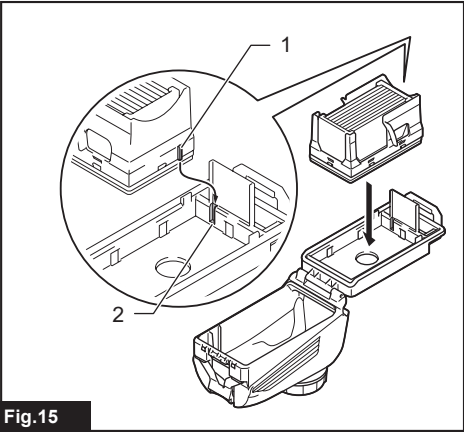


Fig.15

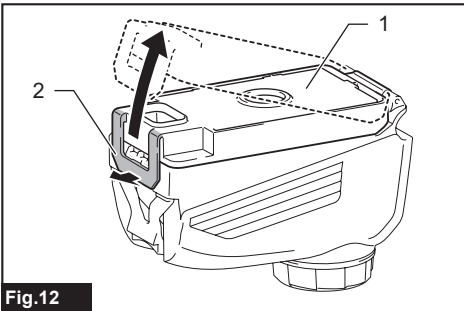


Fig.12

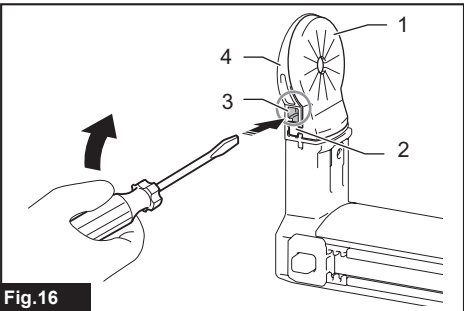


Fig.16

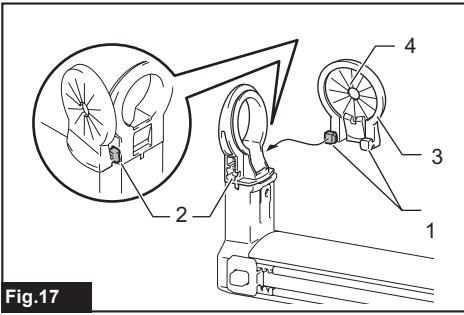


Fig.17

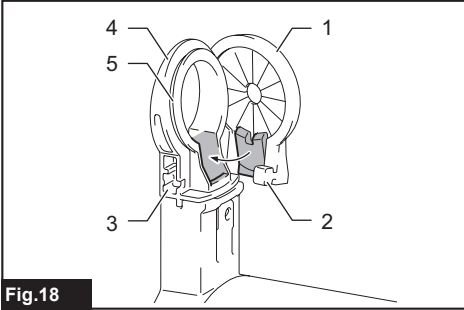


Fig.18

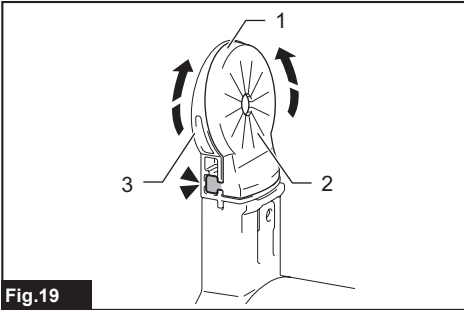


Fig.19

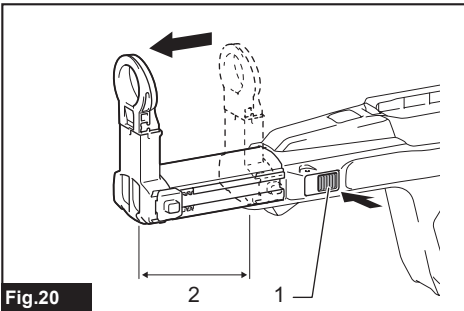


Fig.20

INTRODUCTION

The accessory is designed to be used with following Makita Combination Hammer to extract concrete dust while drilling.

HR007G
GRH07

SAFETY WARNINGS

Read all safety warnings, instructions, illustrations and specifications provided with your power tool before using this dust collection system with your power tool.

⚠CAUTION:

- The dust collection system is intended for drilling in concrete only. Do not use the dust collection system for drilling in metal or wood.
- Always be sure that the tool is switched off and the battery cartridge is removed before carrying out any work on the tool.
- When using the tool with the dust collection system, be sure to attach the filter to the dust collection system to prevent dust inhalation.
- Before using the dust collection system, check that the filter is not damaged. Failure to do so may cause dust inhalation.
- Do not use the dust collection system for drilling in wet concrete or use this system in wet environment. Failure to do so may cause malfunction.
- Do not point the nozzle at yourself or others when releasing the nozzle by pushing the guide adjustment button.
- Always follow national laws, regulations and ordinance which prescribe working with materials hazardous to health.
- Wear respiratory protection when emptying the dust case.

⚠NOTICE:

- Do not use the dust collection system for core drilling or chiseling.
- Before installing the dust collection system, make sure that the attachment points and power tool itself are free from dust and foreign matter. After installing the dust collection system, also make sure that it is securely installed.
- Do not touch the filter section when cleaning it.
- Do not use a brush or air duster to clean the filter section. Using a brush or compressed air may damage the filter.
- Never use gasoline, benzine, thinner, alcohol or the like for maintenance. Discoloration, deformation or cracks may result.

ASSEMBLY

Installing dust collection system

1. Slide the air duct cap out of the motor housing while lifting the lock tab up to the unlocked position.
▶ Fig.1: 1. Air duct cap 2. Lock tab
2. Mount the tool onto the dust collection system by sliding the guide grooves on bottom surface of the gear housing over the guide rails on top surface of the dust collection system until it locks in place with a click.
▶ Fig.2: 1. Guide grooves 2. Guide rails 3. Dust collection system

Removing dust collection system

1. Dismount the tool from the dust collection system by sliding the tool away off while pressing the lock off button on the dust collection system.
▶ Fig.3: 1. Dust collection system 2. Lock off button
2. Slide the air duct cap back along the guide grooves on gear housing until it locks in place with a click.
▶ Fig.4: 1. Air duct cap 2. Guide grooves

NOTICE: Make sure to place the air duct cap back over the air duct after detaching the dust collection system from the tool. Tool performance can be affected if it is operated without the air duct cap in place.

OPERATION

Adjusting nozzle position

Slide in and out the nozzle guide while pressing the guide adjustment button, and then release the button at an exact position where the tip of the bit sits just behind the front surface of the nozzle.

- ▶ Fig.5: 1. Nozzle guide 2. Guide adjustment button
3. Tip of bit 4. Front surface of nozzle

NOTE: Before adjusting the nozzle position, press the guide adjustment button to release the tension on the nozzle guide and set it free into a fully extended position.

Adjusting drilling depths

Drilling depth can be adjusted by changing the lengths between the depth adjustment button and rear end of the nozzle guide. Press and hold the depth adjustment button and slide it to your desired position.

- ▶ Fig.6: 1. Depth adjustment button 2. Nozzle guide
3. Drilling depths

Beating dust on the filter

CAUTION: Do not turn the dial on the dust case while the dust case is removed from the dust collection system. Doing so may cause dust inhalation.

CAUTION: Always switch off the tool when turning the dial on the dust case. Turning the dial while the tool is running may result in the loss of control of the tool.

► Fig.7: 1. Dust case 2. Dial

Disposing of dust

CAUTION: Be sure to wear dust mask when disposing of dust.

CAUTION: Empty the dust case regularly before the dust case becomes full. Failure to do so may decrease the dust collection performance and cause dust inhalation.

CAUTION: The performance of dust collection decreases if the filter in the dust case become clogged. Replace the filter with new one after approximately 200 times of dust fulfillment as a guide. Failure to do so may cause dust inhalation.

1. Remove the dust case while pressing down the latch lever of the dust case.

► Fig.8: 1. Latch lever

2. Lift the lock tab slightly outwards and open the dust case cover.

► Fig.9: 1. Dust case cover 2. Lock tab

3. Dispose of the dust, and then clean the filter.

► Fig.10

NOTICE: When cleaning the filter, tap the case of the filter gently by hand to remove dust. Do not tap the filter directly; touch the filter with brush or similar; or blow compressed air on the filter. Doing so may damage the filter.

MAINTENANCE

Replacing filter of dust case

1. Remove the dust case while pressing down the latch lever of the dust case.

► Fig.11: 1. Latch lever

2. Lift the lock tab slightly outwards and open the dust case cover.

► Fig.12: 1. Dust case cover 2. Lock tab

3. Insert a flat-blade screwdriver in between the filter case and dust case cover as shown in the figure. Press the side walls of the filter case inwards, and lift the filter case up off using the flat-blade screwdriver.

► Fig.13: 1. Flat-blade screwdriver 2. Filter case
3. Dust case cover

4. Push the filter out of the filter case as shown in the figure.

► Fig.14: 1. Filter 2. Filter case

5. Replace a new filter in the filter case. Set the filter case back onto the dust case aligning the guide projection on the filter case with the groove in the dust case.

► Fig.15: 1. Guide projection 2. Groove

6. Close the dust case cover, and then reassemble the dust case to the dust collection system.

Replacing sealing cap

1. Insert a flat-blade screwdriver, with its flat surfaces vertical, into one of the release holes placed on the sides of the nozzle head. Tilt the flat-blade screwdriver at an angle to squeeze and pop the cube hook of the sealing cap out of the molded receptacle. Then peel the rubber edges of the sealing cap away from the rims of the nozzle head opening.

► Fig.16: 1. Sealing cap 2. Cube hook 3. Release hole 4. Nozzle head

2. Set one of cube hooks of a renewed sealing cap into the molded receptacle in the nozzle head with a recessed surface of the sealing cap facing forwards.

► Fig.17: 1. Cube hooks 2. Receptacles 3. Sealing cap 4. Recessed surface

3. Place the other hook into the receptacle on the opposite side of the nozzle head, while repositioning the sealing cap to fit finely to the nozzle head.

► Fig.18: 1. Sealing cap 2. Cube hook 3. Receptacle 4. Nozzle head 5. Rims

4. Gently lay the rubber edges of the sealing cap down over the rims of the nozzle head opening from bottom to top.

► Fig.19: 1. Rubber edges 2. Sealing cap 3. Nozzle head

Storage

NOTICE: When not in use for a certain period of time, the nozzle guide needs to be extended to approximately 100 mm (3-15/16") from its fully shortened position. Failing to do so may damage the duct hose pre-installed in the nozzle guide.

► Fig.20: 1. Guide adjustment button 2. Approx. 100 mm (3-15/16")

Makita Europe N.V. Jan-Baptist Vinkstraat 2,
3070 Kortenberg, Belgium

Makita Corporation 3-11-8, Sumiyoshi-cho,
Anjo, Aichi 446-8502 Japan

www.makita.com

885920-920
EN, PTBR, FR, DE,
IT, NL, ES, PT, DA,
EL, TR, SV, NO,
FI, LV, LT, ET, PL,
HU, SK, CS, SL,
SQ, BG, HR, MK,
SR, RO, UK, RU,
KK, ZHCN, ZHTW,
KO, ID, VI, TH, MS,
FA, AR
20210701